

**BALDOR® • RELIANCE** 

**Product Information Packet**

**VJPFPM2543T**

**50//40HP, 1770//1470RPM, 3PH, 60//50HZ, 326J**

Part Detail							
Revision:	E	Status:	PRD/A	Change #:		Proprietary:	No
Type:	AC	Elec. Spec:	40WGX317	CD Diagram:	CD0104	Mfg Plant:	
Mech. Spec:	40L037	Layout:	40LYL037	Poles:	04	Created Date:	12-10-2015
Base:	N	Eff. Date:	08-22-2018	Leads:	12#8		

Specs			
Catalog Number:	VJPFPM2543T	Heater Indicator:	No Heater
Enclosure:	OPSB	Insulation Class:	F
Frame:	326JP	Inverter Code:	Not Inverter
Frame Material:	Steel	KVA Code:	F
Output @ Frequency:	40.000 HP @ 50 HZ	Lifting Lugs:	Vertical Lifting Lugs
	50.000 HP @ 60 HZ	Locked Bearing Indicator:	Locked Bearing
Synchronous Speed @ Frequency:	1500 RPM @ 50 HZ	Motor Lead Quantity/Wire Size:	12 @ 8 AWG
Voltage @ Frequency:	460.0 V @ 60 HZ	Motor Lead Exit:	Ko Box
	380.0 V @ 50 HZ	Motor Lead Termination:	Flying Leads
	230.0 V @ 60 HZ	Motor Type:	4064M
	190.0 V @ 50 HZ	Mounting Arrangement:	F1
Agency Approvals:	CSA EEV	Power Factor:	83
	UL	Product Family:	Fire Pump Motor
Auxillary Box:	No Auxillary Box	Pulley End Bearing Type:	Ball
Auxillary Box Lead Termination:	None	Pulley Face Code:	C-Face
Base Indicator:	No Mounting	Pulley Shaft Indicator:	Tapped & Key
Bearing Grease Type:	Polyrex EM (-20F +300F)	Rodent Screen:	Included
Blower:	None	Shaft Extension Location:	Pulley End

<b>Current @ Voltage:</b>	60.000 A @ 460.0 V	<b>Shaft Ground Indicator:</b>	No Shaft Grounding
	58.000 A @ 380.0 V	<b>Shaft Rotation:</b>	Reversible
	120.000 A @ 230.0 V	<b>Shaft Slinger Indicator:</b>	Shaft Slinger
	116.000 A @ 190.0 V	<b>Speed Code:</b>	Single Speed
<b>Design Code:</b>	B	<b>Motor Standards:</b>	NEMA
<b>Drip Cover:</b>	Drip Cover	<b>Starting Method:</b>	Wye Start - Delta Run
<b>Duty Rating:</b>	CONT	<b>Thermal Device - Bearing:</b>	None
<b>Electrically Isolated Bearing:</b>	Not Electrically Isolated	<b>Thermal Device - Winding:</b>	None
<b>Feedback Device:</b>	NO FEEDBACK	<b>Vibration Sensor Indicator:</b>	No Vibration Sensor
<b>Front Face Code:</b>	Drip Cover Mounting	<b>Winding Thermal 1:</b>	None
<b>Front Shaft Indicator:</b>	None	<b>Winding Thermal 2:</b>	None

Nameplate NP3454L											
CAT.NO.	VJPFPM2543T			CUST P/N				I.P.	23		
SPEC.	40L037X317H2			SER.NO.				FRAME	326JP		
HZ	60	HP	50	RPM	1770	HZ	50	HP	40	RPM	1470
VOLTS	230/460			CODE	F	VOLTS	190/380			CODE	F
AMPS	120/60			DES	B	AMPS	116/58			DES	B
EFF	93	SER.F.	1.15	PF	83	EFF	92.4	SER.F.	1.15	PF	83
RATING	40C AMB-CONT			DE BRG	6312			GREASE	POLYREX EM		
BLANK				ODE BRG	6309			MTR. WT.	378		
				CLASS	F						
				ENCL	OPSB						
								PH	3		
								CC	010A		
HTR-VOLTS		HTR-AMPS		HTR-WATTS							

Parts List		
Part Number	Description	Quantity
SA311960	SA 40L037X317H2	1.000 EA
RA299400	RA 40L037X317H2	1.000 EA
HA6361A01	LIFTING LUG FOR 37, 39 & 40 FRAME ZINC	2.000 EA
HA6017	CAST ADAPTER, 40,42 KOBX	1.000 EA
19XW3118A12	.31-18 X .75 HEX WASHER HEAD TAPTITE II	2.000 EA
HW1001A31	LOCKWASHER 5/16, ZINC PLT.591 OD, .319 I	2.000 EA
WD1000B25	GND LUG, BURNDY L125HP OR T&B L125HP-BB	1.000 EA
19XW3118G08	.31-18X.50,HEX WSHR HD,TAPTITE 2,GREEN	1.000 EA
10CB3001	CONDUIT BOX CAST W/2.500 LEAD HOLE	1.000 EA
19XW3118A12	.31-18 X .75 HEX WASHER HEAD TAPTITE II	4.000 EA
HW1001A31	LOCKWASHER 5/16, ZINC PLT.591 OD, .319 I	4.000 EA
40EP3200A01	STD FREP OPEN 309 BRG W/DRIP COVER	1.000 EA
HA1166A06	RODENT SCREEN FOR 40 ENDPLATE 40EP3200.	1.000 EA
51XW1032A06	10-32 X .38, TAPTITE II, HEX WSHR SLTD S	4.000 EA
HW5100A11	W3917-042 WVY WSHR (WB)	1.000 EA
40EP1401A03	FR ENDPLATE, MACH OPEN NEMA 324-6T W/SCR	1.000 EA
HA1166A02	RODENT SCREEN FOR 40 ENDPLATE 40EP1300A.	1.000 EA
51XW1032A06	10-32 X .38, TAPTITE II, HEX WSHR SLTD S	4.000 EA
10XN3118K40	5/16-18 X 2.50" HEX HD, GRADE 5	4.000 EA
HW1001A31	LOCKWASHER 5/16, ZINC PLT.591 OD, .319 I	4.000 EA
XY3816A12	3/8-16 FINISHED NUT	8.000 EA
HA7205	"L" SHAPE LIFTING LUG FOR 37,39 & 40 FRA	2.000 EA
40FH2500A01	SP'L DRIP COVER MODEL 40- OPEN	1.000 EA
10XN2520K12	1/4-20 X.75 GRD 5	2.000 EA

Parts List (continued)		
Part Number	Description	Quantity
10CB3500SP	CONDUIT BOX LID, CAST	1.000 EA
51XW2520A12	.25-20 X .75, TAPTITE II, HEX WSHR SLTD	4.000 EA
HA2009A04	39-81 SLINGER (STERLING)	1.000 EA
80XN1032A06	10-32 X 3/8 SET SC HEX SOCK	1.000 EA
HW2501E22	KEY, 1/4 SQ X 2.500	1.000 EA
LB1115N	LABEL,LIFTING DEVICE (ON ROLLS)	1.000 EA
HW4500A03	GREASE FITTING, .125 NPT 1610(ALEMITE) 8	1.000 EA
HW4500A20	1/8NPT SL PIPE PLUG	1.000 EA
HA4051A00	PLASTIC CAP FOR GREASE FITTING	1.000 EA
MJ1000A02	GREASE, MOBIL POLYREX EM - 124047	0.050 LB
HW4500A03	GREASE FITTING, .125 NPT 1610(ALEMITE) 8	1.000 EA
HW4500A20	1/8NPT SL PIPE PLUG	1.000 EA
HA4051A00	PLASTIC CAP FOR GREASE FITTING	1.000 EA
HA3154A06	THRUBOLT STUD 3/8-16 X 19.500	4.000 EA
MG1025R44	WILKOFASST, 784.109, CARMINE RED #3002	0.050 GA
85XU0407S04	4X1/4 U DRIVE PIN STAINLESS	4.000 EA
40AD2002A01	LEXAN BAFFLE 40 FR OPEN	1.000 EA
40AD2002A01	LEXAN BAFFLE 40 FR OPEN	1.000 EA
LB1119N	WARNING LABEL	1.000 EA
LC0104A01	CONNECTION DIAGRAM	1.000 EA
NP3454L	ALUM FIRE PUMP MOTOR(LEGACY/BALDOR ONLY)	1.000 EA
40PA1010	PACKAGING GROUP, PRINT PK1151A06	1.000 EA
MN416A01	TAG-INSTAL-MAINT no wire (1200/bx) 3/19	1.000 EA

**AC Induction Motor Performance Data**

Record # 54093 - Typical performance - not guaranteed values

<b>Winding:</b> 40WGX317-R001	<b>Type:</b> 4064M	<b>Enclosure:</b> OPSB
-------------------------------	--------------------	------------------------

Nameplate Data				460 V, 60 Hz: High Voltage Connection	
Rated Output (HP)	50//40			Full Load Torque	149 LB-FT
Volts	230/460//190/380			Start Configuration	direct on line
Full Load Amps	120/60//116/58			Breakdown Torque	374 LB-FT
R.P.M.	1770//1470			Pull-up Torque	190 LB-FT
Hz	60//50	Phase	3	Locked-rotor Torque	236 LB-FT
NEMA Design Code	B	KVA Code	F	Starting Current	342 A
Service Factor (S.F.)	1.15			No-load Current	22.8 A
NEMA Nom. Eff.	93	Power Factor	83	Line-line Res. @ 25°C	0.16058 Ω
Rating - Duty	40C AMB-CONT			Temp. Rise @ Rated Load	55°C
S.F. Amps				Temp. Rise @ S.F. Load	68°C

Load Characteristics 460 V, 60 Hz, 50 HP

% of Rated Load	25	50	75	100	125	150	S.F.
Power Factor	48	70	80	83	85	85	84
Efficiency	90.5	93.6	94	93.6	92.9	91.7	93.2
Speed	1794.3	1786.4	1778.8	1770.7	1762.3	1751.3	1766
Line amperes	26.6	35.8	47.1	60.1	74.7	90.7	68.9

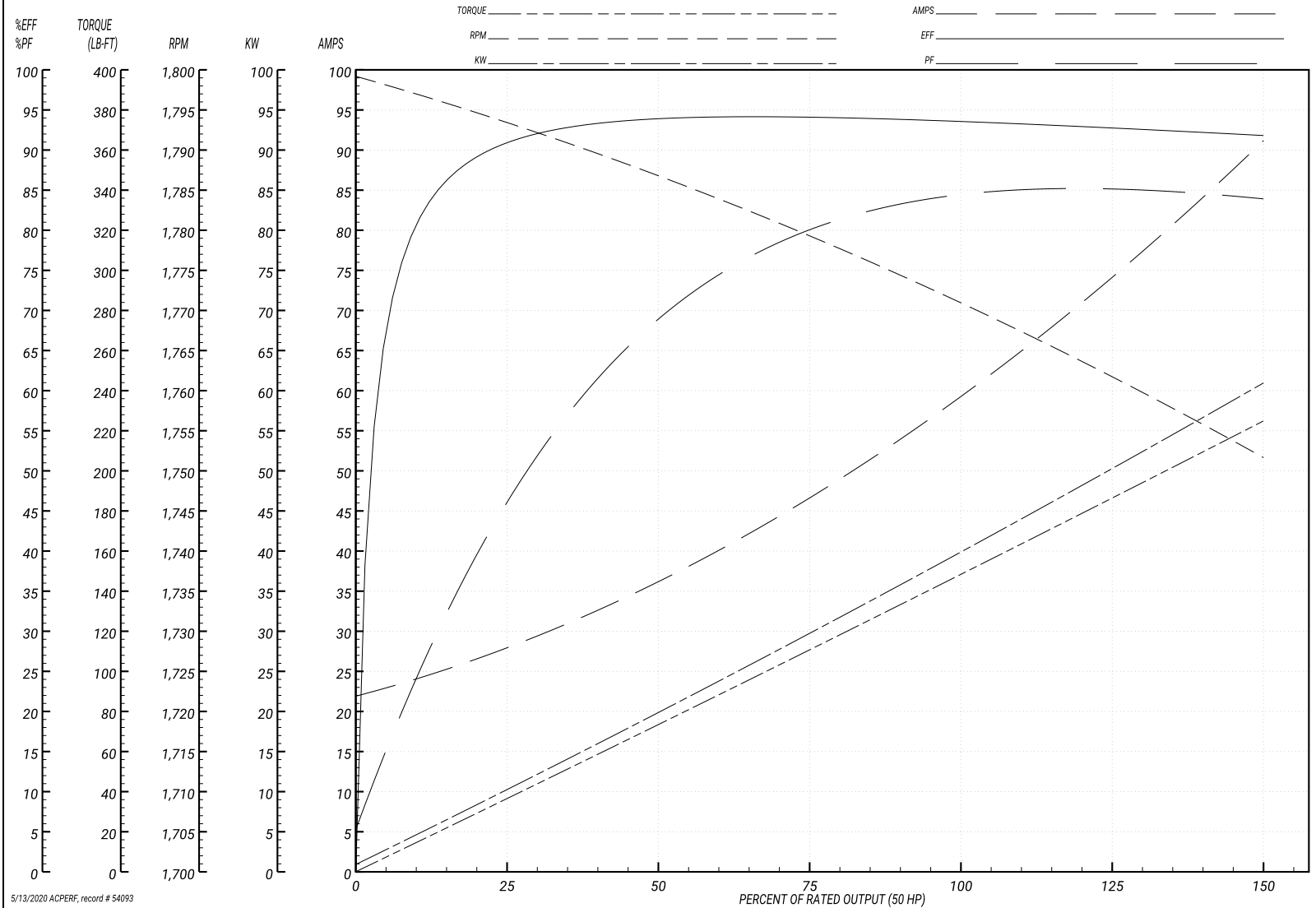
Performance Graph at 460V, 60Hz, 50.0HP Typical performance - Not guaranteed values

ABB Motors and Mechanical Inc.

WINDING # 40WGX317

Typical performance - not guaranteed values.

50 HP 3 PH 60 HZ 1770.7 RPM 460 V 4064M  
 TORQUES(LB-FT): PO=374 PU=190 LR=236 LRA=342



5/13/2020 ACPERF, record # 54093

**AC Induction Motor Performance Data**

Record # 54094 - Typical performance - not guaranteed values

<b>Winding:</b> 40WGX317-R001	<b>Type:</b> 4064M	<b>Enclosure:</b> OPSB
-------------------------------	--------------------	------------------------

Nameplate Data				380 V, 50 Hz: High Voltage Connection	
Rated Output (HP)	50//40			Full Load Torque	143 LB-FT
Volts	230/460//190/380			Start Configuration	direct on line
Full Load Amps	120/60//116/58			Breakdown Torque	363 LB-FT
R.P.M.	1770//1470			Pull-up Torque	194 LB-FT
Hz	60//50	Phase	3	Locked-rotor Torque	241 LB-FT
NEMA Design Code	B	KVA Code	F	Starting Current	325 A
Service Factor (S.F.)	1.15			No-load Current	22 A
NEMA Nom. Eff.	93	Power Factor	83	Line-line Res. @ 25°C	0.155 Ω
Rating - Duty	40C AMB-CONT			Temp. Rise @ Rated Load	53°C
S.F. Amps				Temp. Rise @ S.F. Load	67°C
				Locked-rotor Power Factor	34.2
				Rotor inertia	5.09 LB-FT <sup>2</sup>

**Load Characteristics 380 V, 50 Hz, 40 HP**

% of Rated Load	25	50	75	100	125	150	S.F.
Power Factor	49	71	80	84	85	85	85
Efficiency	89.6	93.2	93.5	92.7	91.9	90.6	92.2
Speed	1494	1487	1479	1471	1463	1452	1466
Line amperes	25.7	34.7	45.6	58.3	72.6	88.3	66.9

Performance Graph at 380V, 50Hz, 40.0HP Typical performance - Not guaranteed values

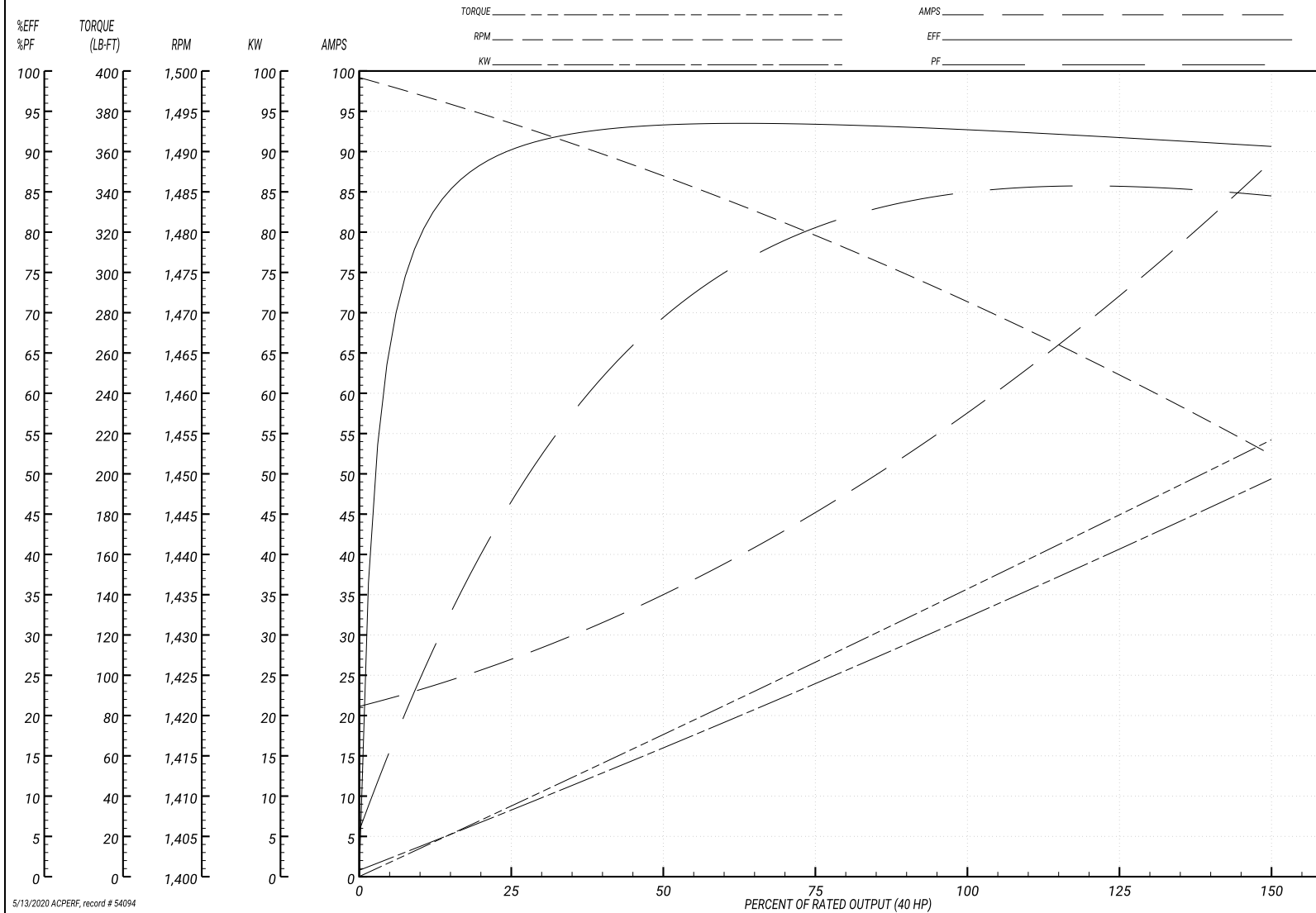
ABB Motors and Mechanical Inc.

WINDING # 40WGX317

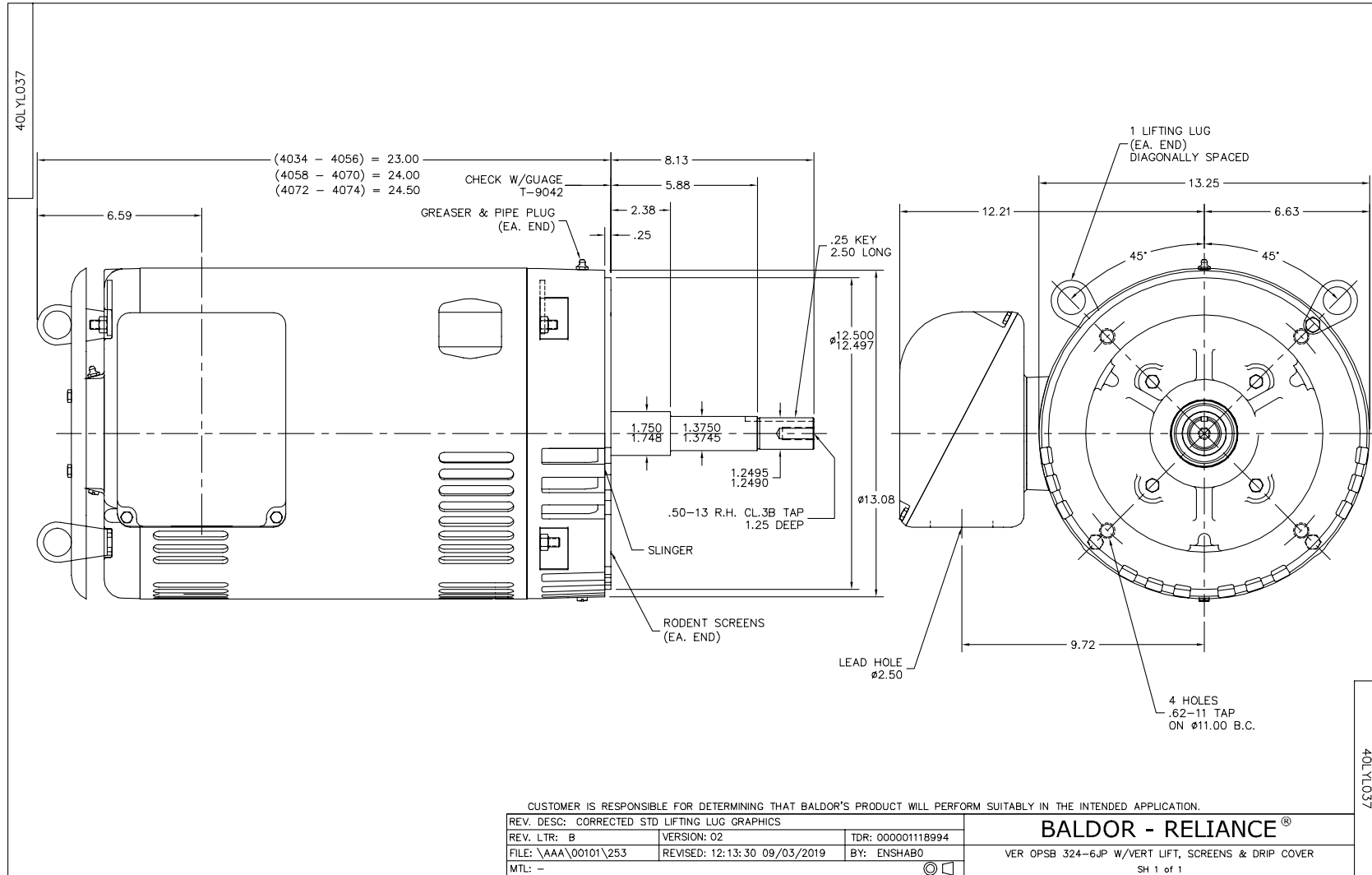
Typical performance - not guaranteed values.

40 HP 3 PH 50 HZ 1471 RPM 380 V 4064M

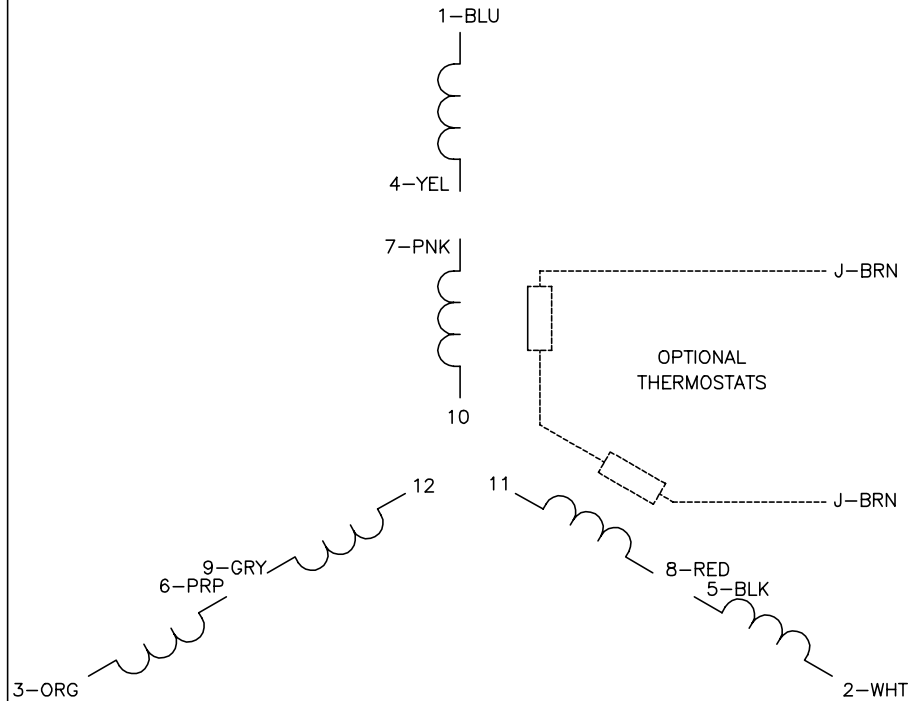
TORQUES(LB-FT): PO=363 PU=194 LR=241 LRA=325



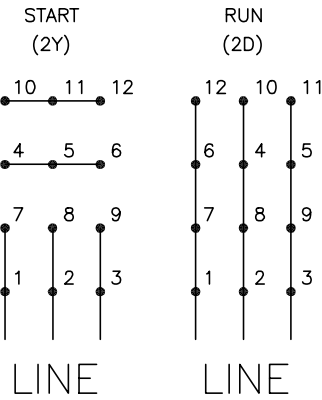
5/13/2020 ACPERF, record # 54094



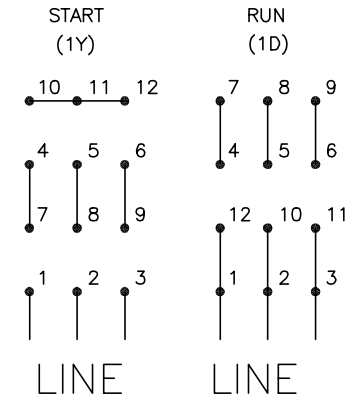
CD0104



**LOW VOLTAGE**



**HIGH VOLTAGE**



**NOTES:**

1. INTERCHANGE ANY TWO LINE LEADS TO REVERSE ROTATION.
2. OPTIONAL THERMOSTATS ARE PROVIDED WHEN SPECIFIED.
3. ACTUAL NUMBER OF INTERNAL PARALLEL CIRCUITS MAY BE A MULTIPLE OF THOSE SHOWN ABOVE.
4. LEAD COLORS ARE OPTIONAL. LEADS MUST ALWAYS BE NUMBERED AS SHOWN.

CD0104

REV. DESC: ADD CLASS CONN00000007		
REV. LTR: D	VERSION: 01	TDR: 000001099922
FILE: \AAA\00008\377	REVISED: 09:02:55 02/19/2019	BY: ENBRIRO
MTL: -	© □	

**BALDOR - RELIANCE®**

3PH, DV, 12 LEADS, Y START/D RUN

SH 1 of 1

Marketing maintained PDF of MN416:

<http://www.baldor.com/support/Literature/Load.ashx/MN416?ManNumber=MN416>